

FOR SALE

100 St Gotthards Ave, Falcon Park, Martlesham Heath, Suffolk IP5 3RP
Beautiful park home situated in a picturesque setting



 40' x 20' | 800 ft²

£259,950

INCLUDES

5' x 7' Metal Shed

Fencing

Allocated Parking

Landscaped Garden

Fully Furnished

The Middleton combines classic charm with modern flexibility, making a bold statement with twin roof dormers and elegant bay windows. Choose a sleek contemporary look or a traditional finish with Georgian bar windows. Inside, soft neutral tones create a calm, cohesive space. Built to Omar's high standards, The Middleton is a stylish, practical home that feels welcoming from the moment you step in.

Situated in Martlesham Heath, Falcon Park is ideally positioned for easy access into the town of Ipswich, which boasts excellent shopping and entertainment facilities, along with historic sites, buildings and 12 medieval churches. A superstore and retail park are within easy walking distance of Falcon Park and there are rail and bus links from Ipswich for easy get aways to further afield.

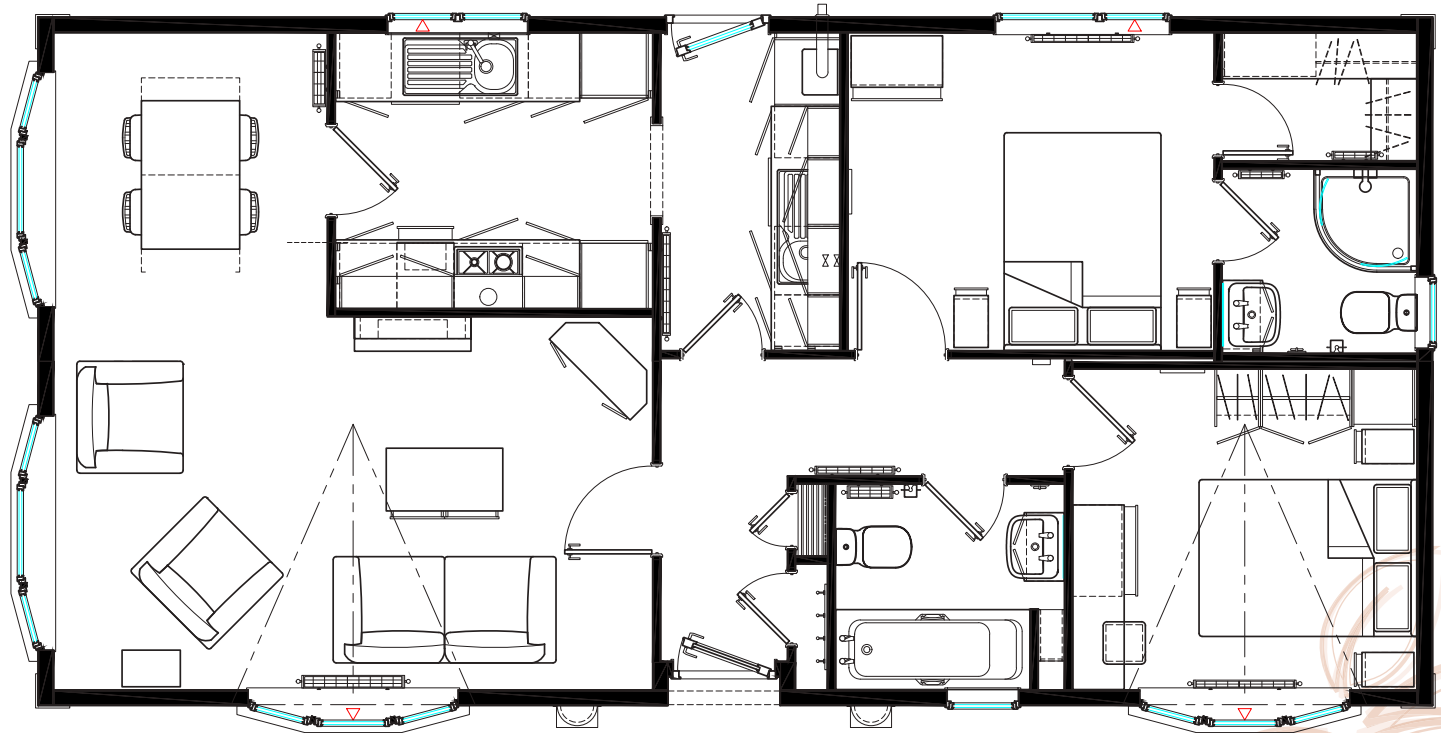
MIDDLETON | 100 St Gotthards

40' x 20' | 800 ft² | 2 Bedrooms | 2 Bathrooms



As life goes on, we realise what really matters. The places we love, the friends we make. So, when it comes to settling down, it's important that you get exactly what you deserve.

At Tingdene Parks, we take the time to make sure that you get the home of your dreams by offering superior modern living exclusively for those starting their new chapter at 45 in a community that looks out for each other, making it a friendlier and safer place to live.



These details have been produced for information only and do not constitute any part of an offer or contract. Intending purchasers must satisfy themselves by inspection or otherwise as to the correctness of any statements contained herein. Photos/ Floor plan may not be of exact home but of a similar model and instances to amenities are approximate. 2025

www.tingdene-parks.net | 01933 427816

Tingdene Parks Ltd, Bradfield Road, Finedon Road Industrial Estate, Wellingborough, Northants NN8 4HB.

